



# GMT MONTHLY MEMBERSHIP PROGRESS REPORT

Results as of: 6/30/2024

Multiple District 14

LOCATION: PENNSYLVANIA

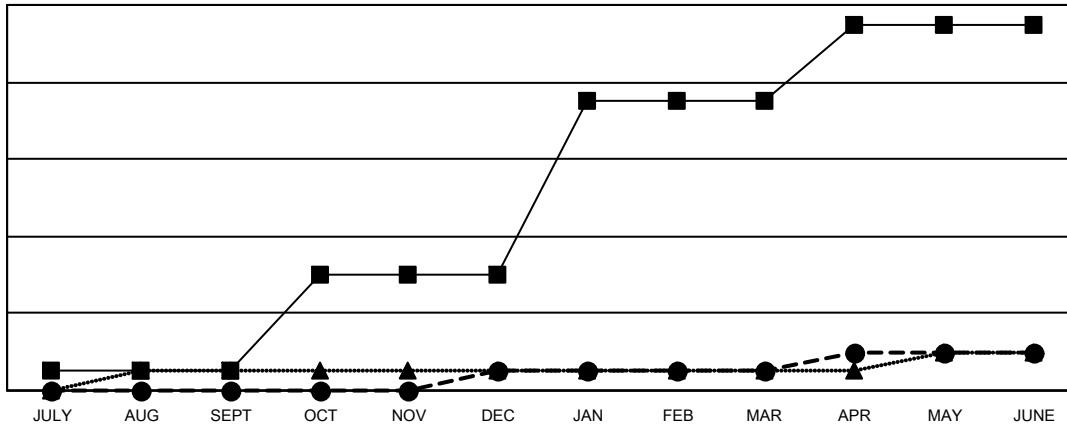
GMT: OPEN

GMT CA 1

| Clubs                 |               |           |               |
|-----------------------|---------------|-----------|---------------|
| RESULTS FOR 2023-2024 |               |           |               |
| QUARTER               | NEW CLUB GOAL | NEW CLUBS | DROPPED CLUBS |
| JULY/AUG/SEPT         | 1             | 0         | 2             |
| OCT/NOV/DEC           | 5             | 1         | 5             |
| JAN/FEB/MAR           | 9             | 0         | 1             |
| APR/MAY/JUNE          | 4             | 1         | 9             |

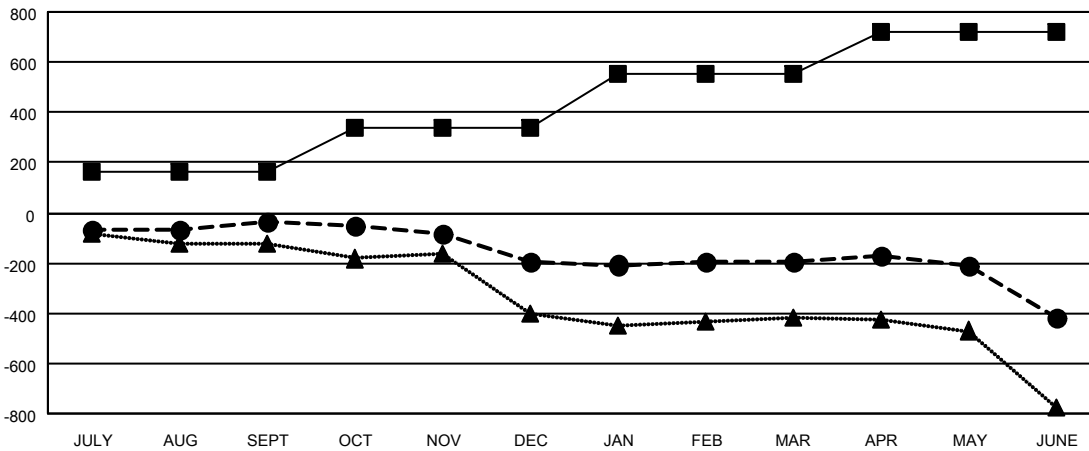
| Members               |                        |                      |  |
|-----------------------|------------------------|----------------------|--|
| RESULTS FOR 2023-2024 |                        |                      |  |
| QUARTER               | MEMBER GROWTH NET GOAL | MEMBER GROWTH ACTUAL | DROPPED MEMBERS ACTUAL (including transfers) |
| JULY/AUG/SEPT         | 161                    | 357                  | 354  |
| OCT/NOV/DEC           | 179                    | 320                  | 443  |
| JAN/FEB/MAR           | 215                    | 360                  | 319  |
| APR/MAY/JUNE          | 163                    | 344                  | 524  |

GOALS AND ACTUAL NEW CLUBS CUMULATIVE



- - CURRENT YEAR GOALS FOR NEW CLUBS
- - CURRENT YEAR ACTUAL NEW CLUBS
- ▲ - LAST YEAR ACTUAL NEW CLUBS

GOALS AND ACTUAL MEMBERS CUMULATIVE



- - MEMBER GROWTH NET GOAL
- - MEMBER GROWTH ACTUAL
- ▲ - LAST YEAR MEMBERSHIP ACTUAL

|   |   |   |
|---|---|---|
| DROPPED CLUBS: 17   | 365 CLUBS OF 619 ADDED 1 OR MORE NEW MEMBERS              | <b>GENDER DISTRIBUTION</b><br>MALE 10,610 (67.80%)<br>FEMALE 5,039 (32.20%) |
| <b>DROPPED MEMBERS</b><br>DECEASED 294<br>CLUB CANCELLED 97<br>OTHER 1,246<br>TOTAL 1,637 | <a href="#">CLICK HERE FOR CUMULATIVE MEMBERSHIP DATA</a> | TOTAL FAMILY UNIT MEMBERS 3,197<br>FAMILY MEMBERS PAYING HALF DUES 1,668    |